

Original Thermo-Plates®



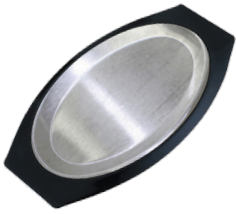
OT11BLC
(OT11BL + OT11SS)
8" X 12.5" X 1.25"
Stainless

LO12BLC
(LO12BL + LO12SS)
14" X 9.5" X 1"
Stainless



LO125BLC
(LO12BL + LO125SS)
14" X 9.5" X 1"
Stainless, Half Plate

Oval Thermo-Plates®



RO117BLC
(RO117BL + FP1/RO117SS)
13.75" X 8.5" X 1.25"
Stainless w/Handles

RO117BLAC
(RO117BL + FP1/RO117AL)
13.75" X 8.5" X 1.25"
Aluminum w/Handles

RO128BLC
(RO117BL + RO128SS)
11.75" X 10" X 1.25"
Stainless, No Handles

Round Thermo-Plates®



RT7BLC
(RT7BL + RT7SS)
9.5" X 9.5" X 1.25"
Stainless

RT701BLC
(RT701BL + RT7SS)
9.5" X 9.5" X 1.25"
Stainless

RT10BLC
(RT10BL + RT10SS)
12" X 12" X 1.25"
Stainless

RT1025BLC
(RT1025BL + RT1025SS)
12.25" X 12.25" X 1.25"
Stainless

Oyster Insert



RTO10SS
(PAIR WITH RT1025BL)
Oyster Insert Only
Stainless

Fish Thermo-Plates®



FP1BLC
(FP1BL + FP1/RO117SS)
14.25" X 9.75" X 1.25"
Stainless

FP1BLAC
(FP1BL + FP1/RO117AL)
14.25" X 9.75" X 1.25"
Aluminum

Buying them separately?

Individual Holders & Inserts

Original Holders: OT11BL, LO12BL
Original Inserts: OT11SS, LO12SS
Half Inserts: LO125SS

Oval Holders: RO117BL, RO128BL
Oval Inserts: FP1/RO1177SS, FP1/RO117AL, RO128SS

Round Holders: RT7BL, RT701BL, RT10BL, RT1025BL
Round Inserts: RT7SS, RT701SS, RT10SS, RT1025SS
Oyster Inserts: RTO10SS

Fish Holders: FP1BL
Fish Inserts: FP1/RO117SS, FP1/RO117AL